

Product Manual for Versa EX™ Network Hub

Compatible with Freedom Micro® II, CX Flex™
4A/1P+, MTI Locks™, and Freedom Focus™

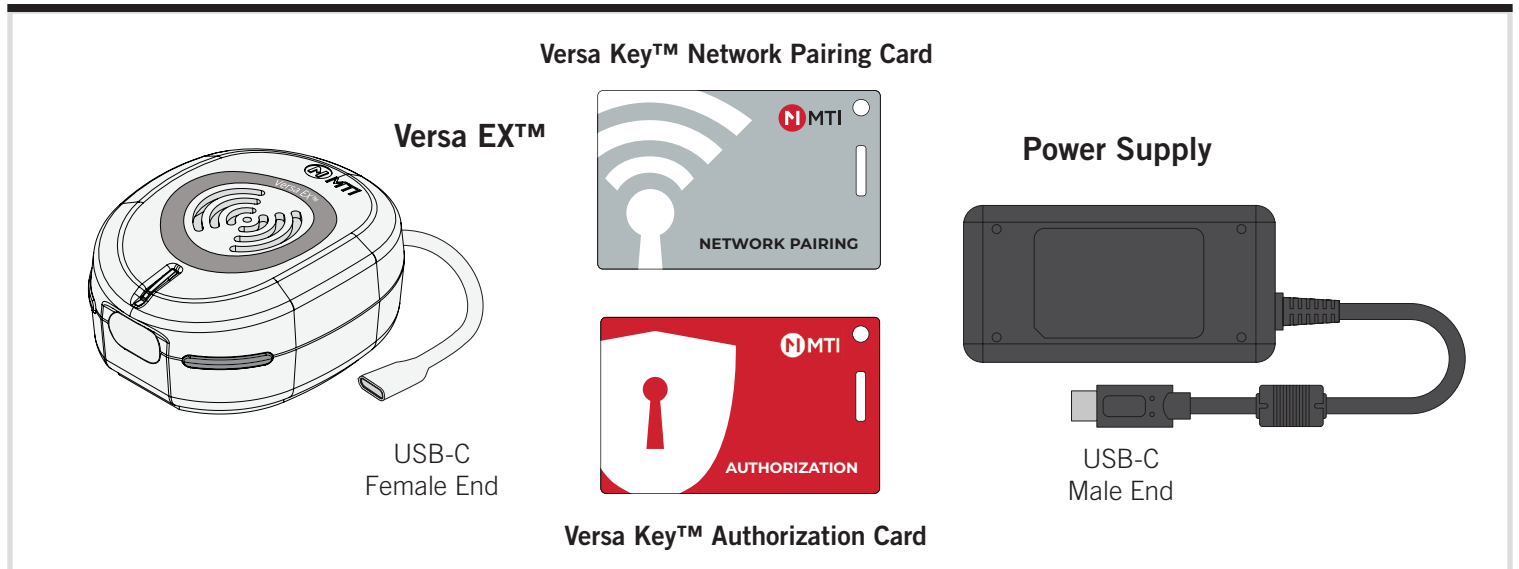
Contents

1.	Materials in Box	2
2.	Installation	2
3.	Key Whitelist	3
4.	Merchandising	3
5.	Managing Alarms/Remote Lockdown	4
6.	Cable Removal	4
7.	Remerchandising	4
8.	Adding New User Keys	5
9.	Entering Network Mode for Previous Installation (Advanced)	5
10.	Deleting Whitelist	6
11.	LED Status Indicators	7
12.	Dimensions	8
13.	FCC and ISED Statement	9
14.	Lithium Battery Handling Guidelines	10

DO NOT REMOVE FROM STORE

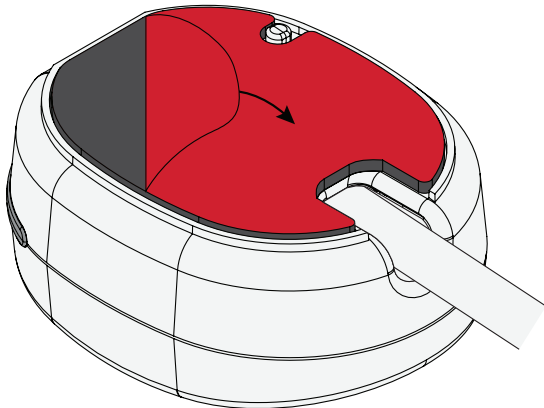


**For additional support, please reach out to our
Contact Center at 800-426-6844**

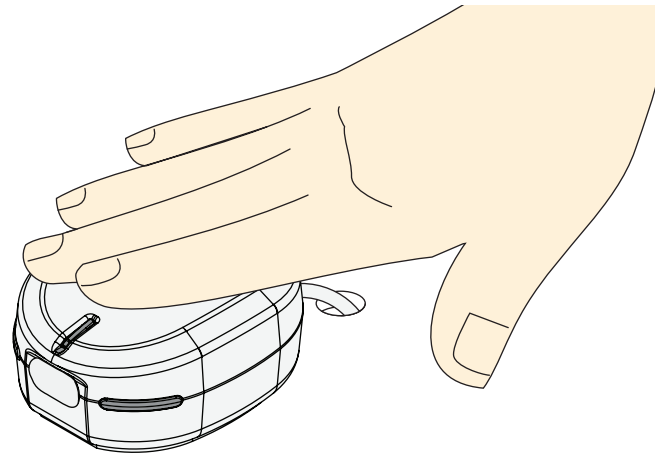


INSTALLATION

- 1 Clean the desired surface with an alcohol pad allow it to completely dry. Peel the red film from the VHB adhesive.



- 2 Feed power cable through hole in fixture (if needed), and press down on the base plate for 10 seconds for full VHB contact. Allow 24 hours for full VHB adhesion.



- 3 Use the individual power supply and plug it into the nearest outlet. Use an outlet installed near the equipment that is easily accessible.



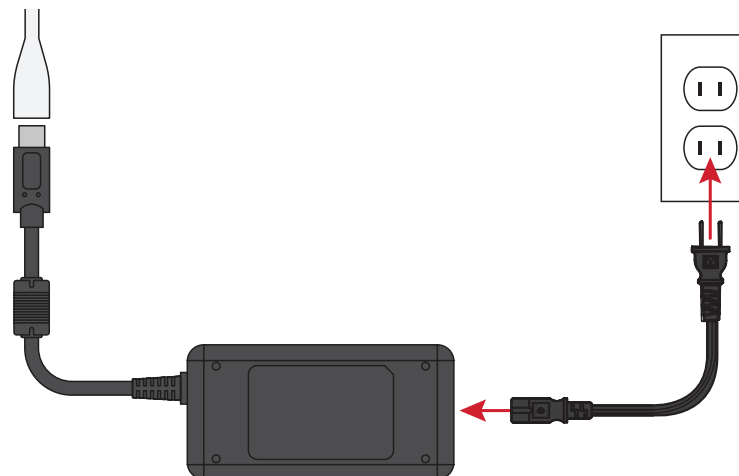
Use only power supply with output ratings 5VDC 3A max, of PS2 or LPS.



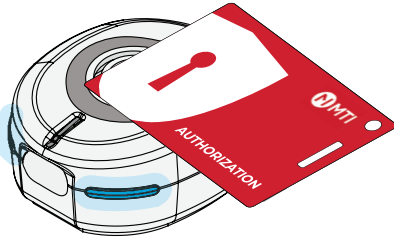
The socket-outlet shall be installed near the equipment and shall be easily accessible.

Utilisez uniquement une alimentation avec des valeurs de sortie de 5VCC 3A Max, de PS2 ou LPS.

La prise de courant doit être installée à proximité de l'équipement et doit être facilement accessible



- 1** Place Authorization Card over the RFID icon to register to system. LED will be solid blue.

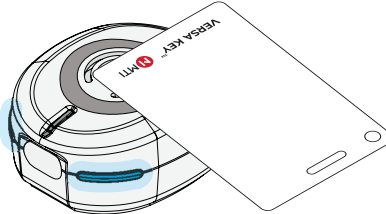


System must be disarmed to perform this operation.

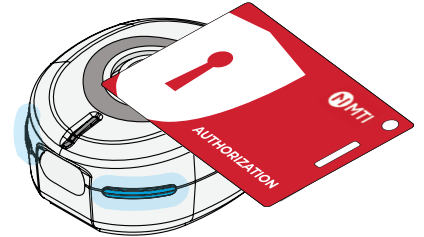
- 2** Place the User Key over the RFID icon you want to add.

If successful → unit beeps 2 times
If unsuccessful → unit beeps 4 times (retry)

Repeat process for all User Keys until they are successfully added.

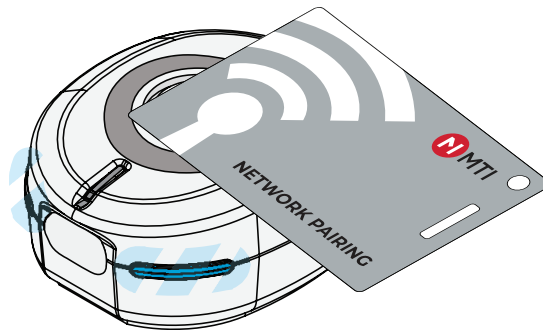


- 3** To close the whitelist mode, place the Authorization Card over the RFID icon. Whitelist mode will end automatically after 3 minutes of no use. LED will double flash yellow every 8 seconds on initial setup, indicating no positions are paired to Versa EX.



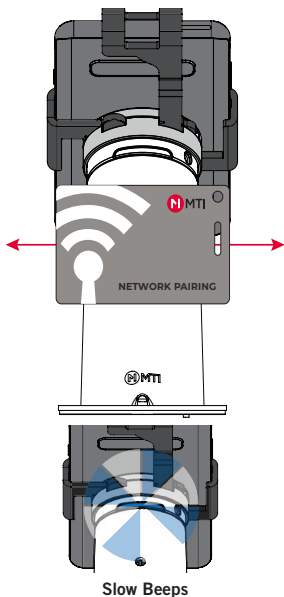
PAIRING VERSA EX

- 1** Place Pairing Card over the RFID icon to place Versa EX in pairing mode. LED will be flashing blue.

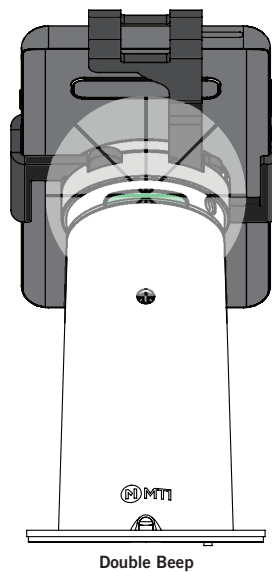


ENTER NETWORK MODE FOR FREEDOM MICRO II

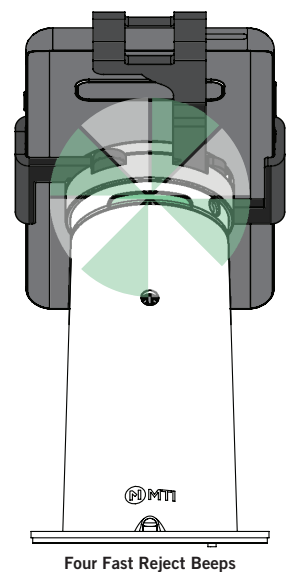
For previously programmed Micro II positions, refer to page 5 for converting to Network Mode



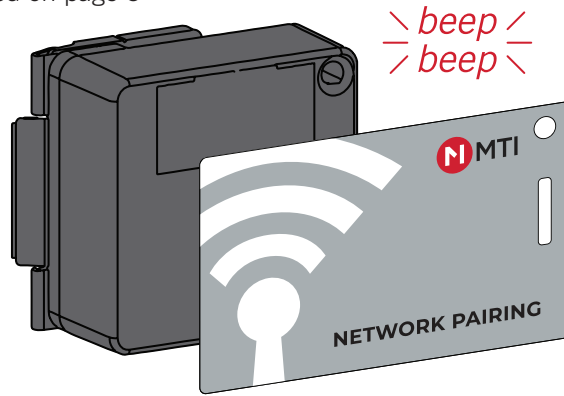
Position connects successfully to mesh network:



Position fails to connect to mesh network within 3 minutes:

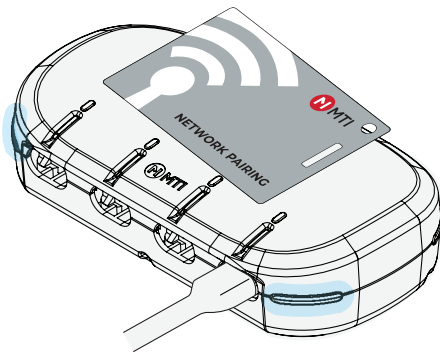


- 1 Swipe Network Pairing card to enter enrollment mode. You will hear slow beep tones indicating it is in pairing mode. A double beep at the end indicates successful pairing. This process is for new installations. For pairing with existing installation refer to steps outlined on page 5



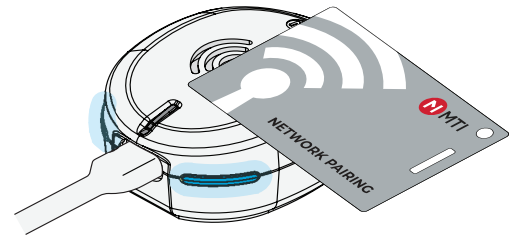
ENTER NETWORK MODE FOR CX FLEX

- 1 Swipe Network Pairing card to enter enrollment mode. You will hear slow beep tones indicating it is in pairing mode. A double beep at the end indicates successful pairing. This process is for new installations. For pairing with existing installation refer to steps outlined on page 5



CX Flex 4A

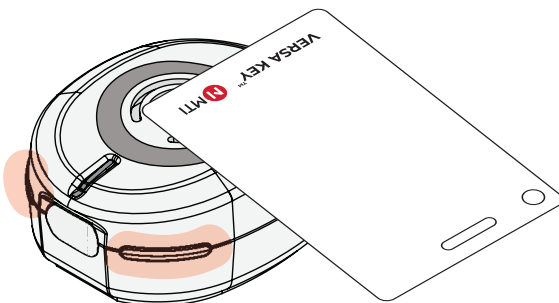
OR



CX Flex 1P+

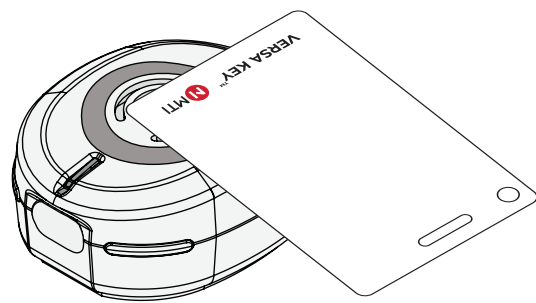
MANAGING ALARMS

- 1 To silence an alarm, tap the user card over the RFID icon. This will silence alarm on position that is alarming and unlock all Micro II positions that entered emergency lockdown upon alarming. All other positions will remain armed. To disarm all, tap Versa key again. To clear alarm condition from position, check all triggers and re-arm the whole position.

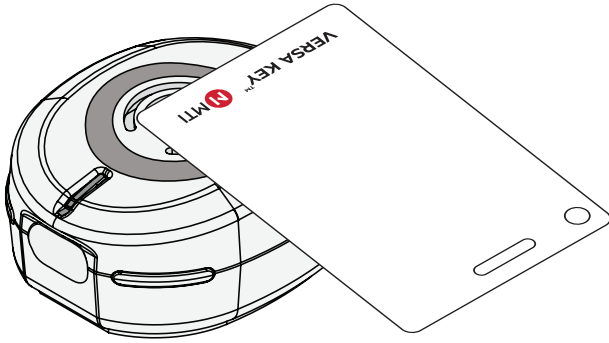


MICRO II LOCKDOWN MODE ACTIVATION

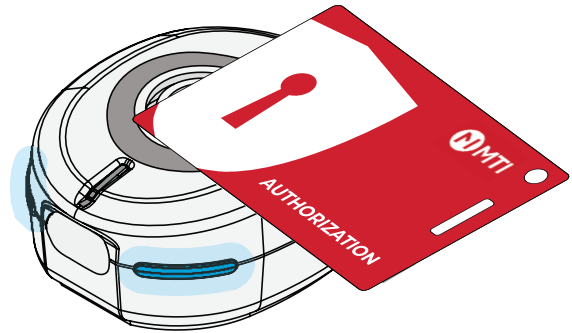
- 1 Tap and hold Versa Key onto Versa EX for 10 seconds. Position will double beep immediately, and then again when lockdown mode has been activated. Repeat step to toggle back to unlocked mode. Any positions set to lockdown at the local level will revert to unlocked if lockdown mode is cleared globally at Versa EX



1 From an armed state, place the user key over the RFID icon to disarm the system. LED will be flashing white.

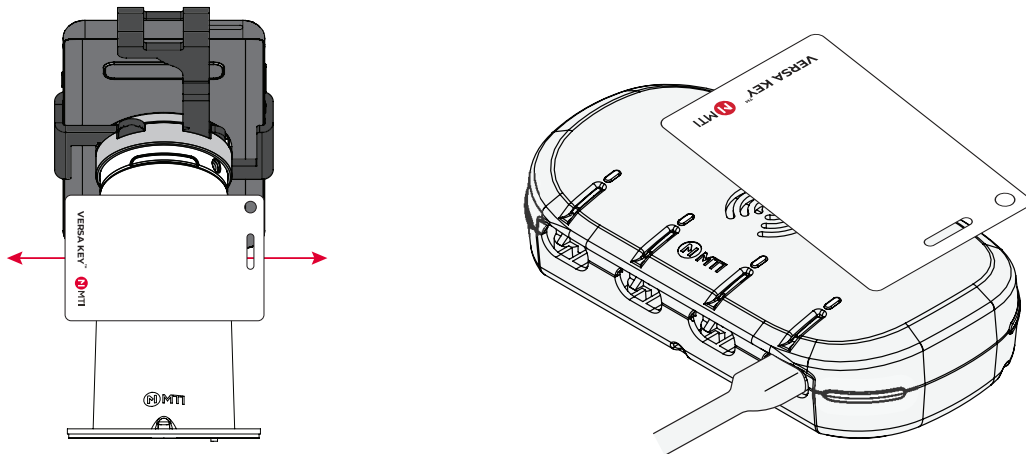


2 Place Authorization Card over the RFID icon. Follow Key Whitelist process starting on page 3.

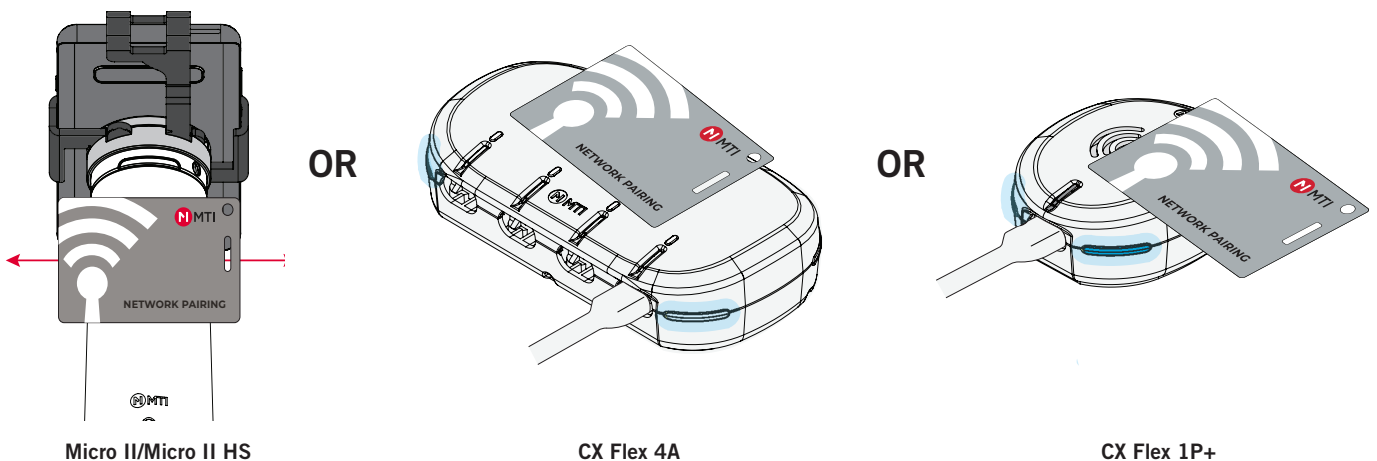


ENTER NETWORK MODE FROM PREVIOUSLY PROGRAMMED DEVICES (Micro II/CX Flex

1 Disarm position with current user key. Key will double beep and



2 Tap and hold for 10 seconds pairing card against security device. Upon successfully entering pairing mode you will hear a double beep, and LED's will turn blue.



Micro II/Micro II HS

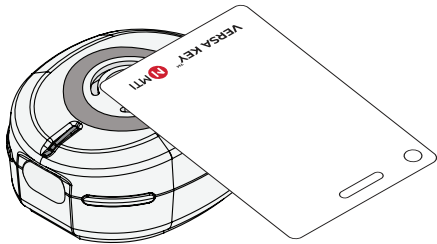
CX Flex 4A

CX Flex 1P+

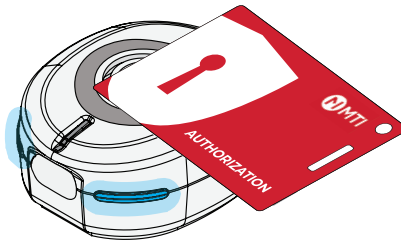
DELETING WHITELIST (This will delete all User Keys from the system.)



1 From an Armed state, place the User Key over the RFID icon to disarm the system. LED will be flashing white.

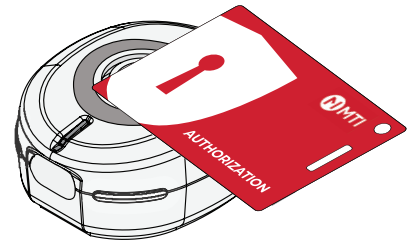


2 Hold down the Authorization Card for 10 seconds, LED will be solid blue.



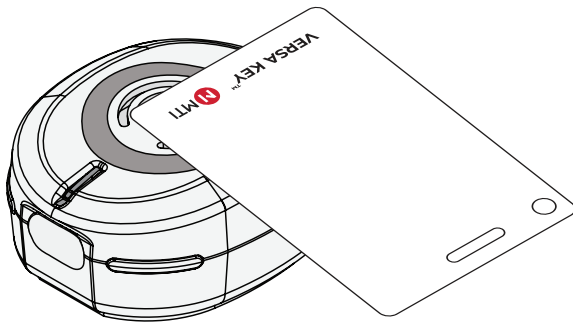
3 Place the Authorization Card over the RFID icon AGAIN while LED is blue.

If successful → unit beeps 2 times and LED double flashes white every 8 seconds
If unsuccessful → unit beeps 4 times (retry)

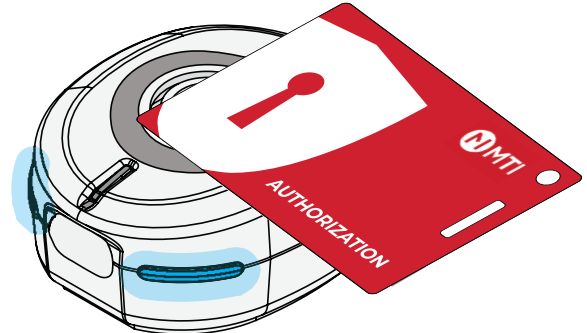


REMOVE INDIVIDUAL KEYS FROM WHITELIST

1 From an Armed state, place the User Key over the RFID icon to disarm the system. LED will be flashing white.

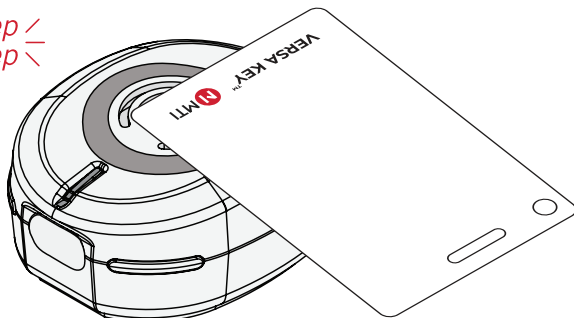


2 Place Authorization Card over the RFID icon to enter programming mode. LED will be solid blue.



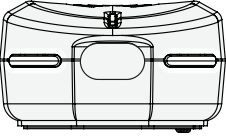
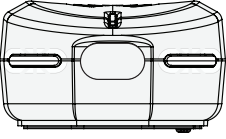
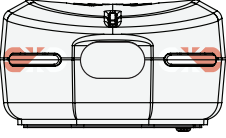
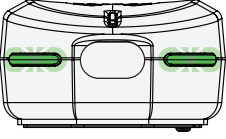
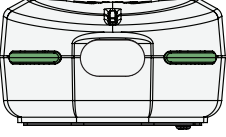
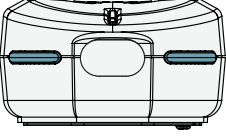
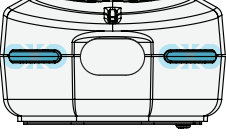
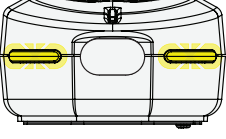
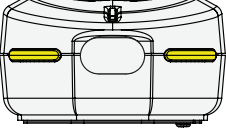
3 Hold down User Key to be removed for 10 seconds. Key will double beep immediately and then double beep confirming successful removal of key.

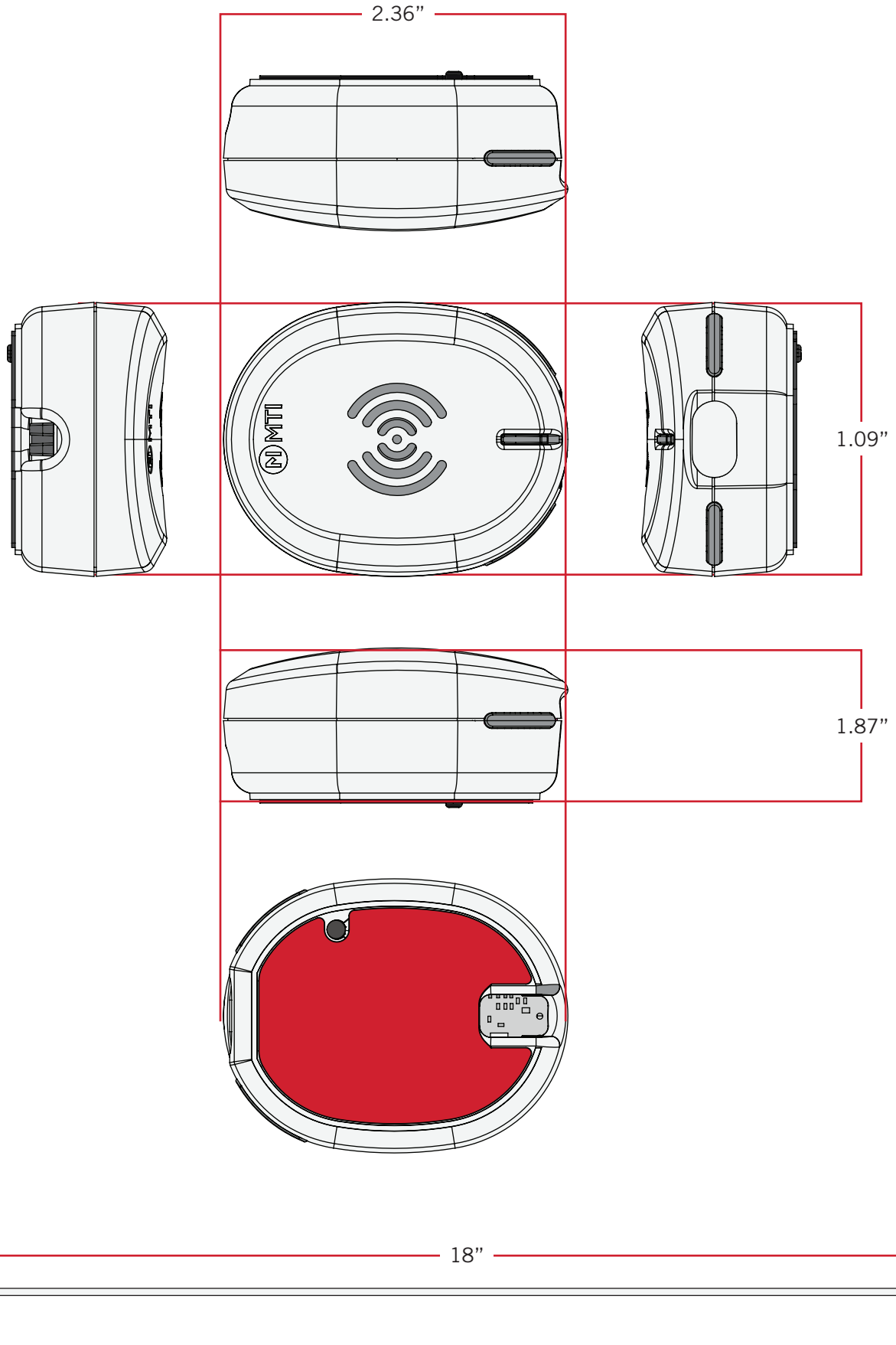
beep
beep



4 Place Authorization card over the RFID icon to exit programming mode, or it will time out automatically after 3 minutes.



Visual Reference	System Status	Condition	Solution
	LED is solid white.	Armed	System is armed.
	LED is flashing white.	Disarmed	System is disarmed and is ready to merchandise or re-arm.
	LED is flashing red and white.	Alarm	System is alarming and requires immediate attention.
	LED is flashing green.	Factory Reset	System has no whitelist or Authorization Card. Follow key whitelist process.
	LED is solid green.	Ready to Whitelist	System has an Authorization Card, but does not have any User Keys added. Follow key whitelist process.
	LED is solid blue.	<ol style="list-style-type: none"> Whitelist Mode (if using Authorization Card) Overcurrent when armed 	<ol style="list-style-type: none"> System is in whitelist enrollment mode. Follow whitelist process to add User Keys. System has gone into overcurrent protection. Unplug any product which may be drawing too much power.
	LED is flashing blue.	<ol style="list-style-type: none"> Connect Provisioning Mode Overcurrent when disarmed 	<ol style="list-style-type: none"> In Connect Provisioning Mode; LEDs return to previous Color when Provisioning is complete or times-out after ~1.5 minutes. System has gone into overcurrent protection and user has disarmed the system. Unplug any product which may be drawing too much power. The system will self-heal.
	LED is flashing yellow.	Keys in whitelist, no positions paired to Versa EX	Pair positions to Versa EX.
	LED is solid yellow.	<ol style="list-style-type: none"> Armed, provisioned for to positions but not communicating to any positions previously paired to Mesh Network 	<ol style="list-style-type: none"> Ensure Connect Mesh is operating properly.



FCC ID: 2AA2X-15000301

Model: Versa EX

FCC Statement

This device complies with Part 15 of the FCC Rules.

Caution: If any changes or modifications not expressly approved by the party responsible for compliance could void the user's authority to operate the equipment.

Operation is subject to the following two conditions: (1) This device may not cause harmful interference, and (2) This device must accept any interference received, including interference that may cause undesired operation.

The grantee is not responsible for any changes or modifications not expressly approved by the party responsible for compliance. Such modifications could void the user's authority to operate the equipment.

The RF Exposure Compliance distance is 20 millimeters.

NOTE: This equipment has been tested and found to comply with the limits for a Class B digital device, pursuant to part 15 of the FCC Rules. These limits are designed to provide reasonable protection against harmful interference in a residential installation. This equipment generates, uses and can radiate radio frequency energy and, if not installed and used in accordance with the instructions, may cause harmful interference to radio communications. However, there is no guarantee that interference will not occur in a particular installation. If this equipment does cause harmful interference to radio or television reception, which can be determined by turning the equipment off and on, the user is encouraged to try to correct the interference by one or more of the following measures:

- Reorient or relocate the receiving antenna.
- Increase the separation between the equipment and receiver.
- Connect the equipment into an outlet on a circuit different from that to which the receiver is connected.
- Consult the dealer or an experienced radio/TV technician for help.

ISED Certification Number: 24439-15000301

Model: Versa EX

ISED Statement

This device complies with Innovation, Science and Economic Development Canada licence-exempt RSS standard(s). Operation is subject to the following two conditions: (1) this device may not cause interference, and (2) this device must accept any interference, including interference that may cause undesired operation of the device.

CAN ICES-3(B)/NMB-3(B)

Le présent appareil est conforme aux CNR Innovation, Sciences et Développement économique Canada applicables aux appareils radio exempts de licence. L'exploitation est autorisée aux deux conditions suivantes:

(1) il ne doit pas produire de brouillage et (2) l'utilisateur du dispositif doit être prêt à accepter tout brouillage radioélectrique reçu, même si ce brouillage est susceptible de compromettre le fonctionnement du dispositif.

CAN ICES-3(B)/NMB-3(B)

The device meets the exemption from the routine evaluation limits in section 2.5 of RSS 102 and compliance with RSS-102 RF exposure, users can obtain Canadian information on RF exposure and compliance.

Le dispositif rencontre l'exemption des limites courantes d'évaluation dans la section 2.5 de RSS 102 et la conformité à l'exposition de RSS-102 rf, utilisateurs peut obtenir l'information canadienne sur l'exposition et la conformité de rf.

This transmitter must not be co-located or operating in conjunction with any other antenna or transmitter. This equipment should be installed and operated with a minimum distance of 20 millimeters between the radiator and your body.

Cet émetteur ne doit pas être Co-placé ou ne fonctionnant en même temps qu'aucune autre antenne ou émetteur. Cet équipement devrait être installé et actionné avec une distance minimum de 20 millimètres entre le radiateur et votre corps.

Technical Data

Trade Name: MTI

Model No.: Versa EX

Input rating: 5 Vdc 3A

Operating Temperature: 0° C to 40° C

Wireless module: RFID

Operating Frequency: 119 – 135 kHz

Max Power: 125kHz: < -10dBuA/m at 10m

Wireless module: Zigbee

Operating Frequency: 2.4GHz: 2405-2480MHz

Max Power: 2.4GHz: < 4dBm



Safety Warnings and Precautions

DANGER

- LITHIUM-ION BATTERIES CAN POSE A RISK OF FIRE, PROPERTY DAMAGE AND SERIOUS INJURY IF DAMAGED OR USED PAST THEIR EFFECTIVE LIFE (USUALLY 14 MONTHS).
- STOP USING THE BATTERY IMMEDIATELY AND STOP CHARGING THE BATTERY IF ABNORMAL HEAT, ODOR, DISCOLORATION, DEFORMATION/SWELLING OR ANY OTHER ABNORMAL CONDITION IS DETECTED.
- Thoroughly read the user's manual before use, as inaccurate handling, storage or use of lithium-ion rechargeable batteries may cause leakage, heat, smoke, fire, or degrade battery performance.
- Lithium-Ion batteries have finite life cycles. If the time that the battery powers equipment between charges becomes shorter than usual, the battery life is at an end. Remove device from service and contact MTI for guidance on replacement options.

CAUTION

- Keep away from heat or open flame, especially if leakage or an odor is detected.
- When not using the battery for an extended period, remove the electronic device from service and store in a place with low humidity and controlled room temperature. Keep the cells in 50% charged state during long period storage. Recommend maintenance is to charge the battery up to 50% of the total capacity every 3 months after receipt of the battery and maintain the voltage 3.7~4.0V.
- Extended or improper storage can result in degraded battery performance and increased risk of failure.

FIRST AID MEASURES

- In case of battery rupture, evacuate personnel from contaminated area and provide maximum ventilation to clear out fumes and gases. Avoid contact with any liquid leaking from the battery.
- If liquid leaks onto your skin or clothes, immediately flush affected areas with plenty of water and soap for at least 15 minutes and seek medical attention. Do not apply ointments unless instructed by a doctor.
- If liquid is leaking from the battery cell gets into your eyes, do not rub your eyes. Immediately flush with plenty of water (eyelids-held open) for at least 15 minutes and seek medical attention.

ADDITIONAL SAFETY INFORMATION

1. For indoor use only. The apparatus shall not be exposed to water.
2. No user replaceable parts inside; refer servicing to manufacturer or qualified service personnel.
3. Only use accessories specified by the manufacturer.
4. Do not expose to excessive heat sources.

Disposal: All electrical and electronic products including batteries should be disposed of separately from the municipal waste stream via designated collection facilities appointed by the government or the local authorities.

This product contains a rechargeable battery. Proper storage, use, and disposal of the battery is important. Please refer to the guidelines below:

1. Properly dispose of the battery; Do not dispose of the battery into a furnace/oven or into a fire or mechanically crush or cut the battery, as this could cause the battery to explode.
2. Storing the battery in an environment at higher temperatures than stated above can result in explosion or leaking of flammable liquid or gas.
3. Subjecting a battery to very low air pressure or high altitudes can result in explosion or leaking of flammable liquid or gas.

INFORMATIONS DE SÉCURITÉ SUPPLÉMENTAIRES

1. Pour usage intérieur uniquement. L'appareil ne doit pas être exposé à l'eau.
2. Aucune pièce remplaçable par l'utilisateur à l'intérieur; confiez l'entretien au fabricant ou au personnel d'entretien qualifié.
3. N'utilisez que les accessoires spécifiés par le fabricant.
4. Ne pas exposer à des sources de chaleur excessive.

Mise au rebut: Tous les produits électriques et électroniques, y compris les batteries, doivent être éliminés séparément du flux de déchets municipaux via des installations de collecte désignées par le gouvernement ou les autorités locales.

Ce produit contient une batterie rechargeable. Le stockage, l'utilisation et la mise au rebut appropriés de la batterie sont importants. Veuillez vous référer aux directives ci-dessous:

1. Éliminez correctement la batterie; Ne jetez pas la batterie dans un four / un four ou dans un feu ou n'écrasez pas ou ne coupez pas mécaniquement la batterie, car cela pourrait faire exploser la batterie.
2. Le stockage de la batterie dans un environnement à des températures plus élevées que celles indiquées ci-dessus peut entraîner une explosion ou une fuite de liquide ou de gaz inflammable.
3. Soumettre une batterie à une pression d'air très basse ou à des altitudes élevées peut entraîner une explosion ou une fuite de liquide ou de gaz inflammable.