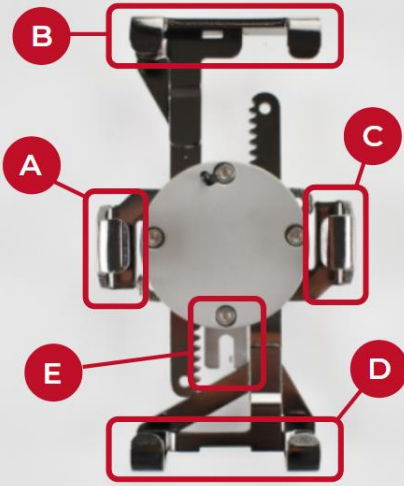

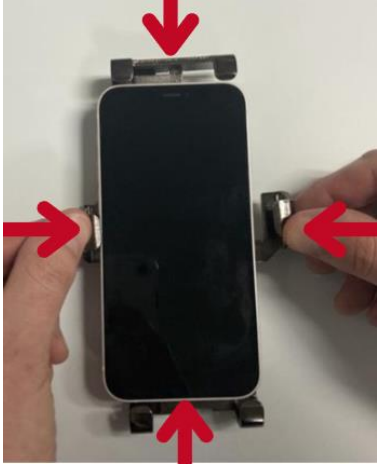


Merchandising a New Device with Freedom Micro II

	<p>Step 0 – Bracket Orientation</p> <p>A – Left arm B – Top arm C – Right arm D – Bottom arm E – Cable capture</p>
	<p>Step 1 – Loosen SpeedBracket Adjustable Arms</p> <p>Take the SpeedBracket out of the box and turn the SpeedBracket upside down and place a flat surface.</p> <p>Using the long side of the FMII Tool, turn the center screw counterclockwise two turns.</p> <p>This will loosen the bracket so the arms can be disengaged</p> <p>NOTE - Always be sure to insert the device in the correct orientation, the bottom of the bracket is indicated by the cable capture. The cable capture is highlighted by the yellow circle on the image in this step.</p>
	<p>Step 2 – Add New Device to SpeedBracket</p> <p>Turn the SpeedBracket over so the device can be installed.</p> <p>Insert the new device into the SpeedBracket and slide the side, top and bottom arms into place so there is precise fit of the device.</p> <p>NOTE – MAKE SURE THAT THE DEVICE IS PUT INTO THE BRACKET IN THE CORRECT ORIENTATION. THE CONNECTOR SIDE OF THE DEVICE SHOULD GO TOWARDS THE CABLE CAPTURE ON THE BOTTOM OF THE BRACKET. THE BRACKET WILL NOT PROPERLY SECURE ON TO THE PUCK IF THE DEVICE IS NOT PLACED INTO THE BRACKET IN THE CORRECT ORIENTATION</p>



Step 3 – Secure the SpeedBracket to the Device

Using your left hand, grip the two side brackets and top bracket standing the SpeedBracket perpendicular to the fixture.

Firmly pushing down on the fixture and squeezing the sides and top, tighten the center screw until tight.



Step 4 – Validate SpeedBracket is Secure

To validate that the SpeedBracket is secure, take your two palms and press strongly on the side arms and then the top and bottom arms.

Additionally pull at the side and side arms to check for further movement. If the brackets do not move or you do not hear a click, the bracket is secured.

Double check that the screw is tight

NOTE – IF YOU HEAR A CLICK OR THE BRACKET MOVES, THIS MEANS THE BRACKET IS NOW PROPERLY ALIGNED. YOU WILL NEED TO TIGHTEN THE SCREW AGAIN. AFTER TIGHTENING, PLEASE VALIDATE THAT THE BRACKETS DO NOT MOVE.



Step 5 – Attach SpeedBracket to FMII Position

Facing the FMII product, turn the SpeedBracket slightly to the left (at 10 o'clock) and place onto the top of the silver puck.

Once engaged, turn to the right 30 degrees until you hear a click. The device will be locked into position.

Verify that the SpeedBracket is attached by wiggling the bracket. If the SpeedBracket stays attached, the product is secure.




Insert the SmartCable into the puck end, ensure the retainer clips both click into place.

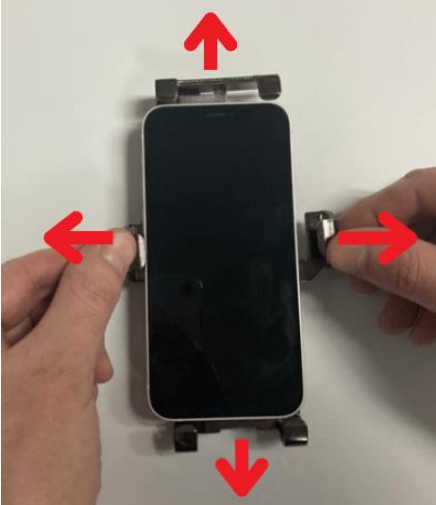
Then attach the SmartCable into the connector end of the device.

NOTE – MAKE SURE THE SPEEDBRACKET IS PROPERLY INSTALLED AND THE CABLE CAPTURE SIDE OF THE BRACKET IS THE CONNECTOR OF THE PUCK. IF UPSIDE DOWN THE SPEEDBRACKET WILL NOT PROPERLY FASTEN.



De-merchandising an Existing Position Freedom Micro II

	<p>Step 0 – Locate the keyhole to release the SpeedBracket on the puck</p> <p>The keyhole may be blocked by the anti-rotation collar if this is the case the puck can be swiveled to access the keyhole</p>
	<p>Step 1 - Remove the SpeedBracket and Phone/Tablet from the FMII position</p> <p>When facing the position from the front, insert the shorter end of the FMII tool into the keyhole which should be on your upper left.</p> <p>Once the tool is inserted, push in and turn towards the front of the position.</p> <p>While the tool is turned, turn the SpeedBracket counterclockwise ~ 30 degrees which will disengage the latch allowing it to be lifted up.</p> <p>Once lifted, remove the charging cable from the device side</p>
	<p>Step 2 – Loosen SpeedBracket Adjustable Arms</p> <p>Once removed from the FMII position, turn the SpeedBracket upside down and place on a flat surface.</p> <p>Using the long side of the FMII Tool, turn the center screw counterclockwise two turns.</p> <p>This will loosen the bracket so the arms can be disengaged</p>

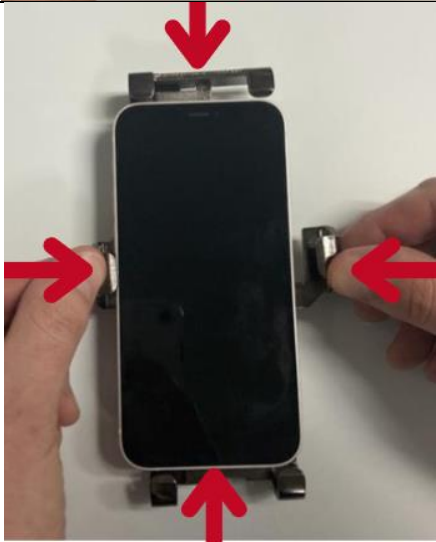


Step 3 – Open SpeedBracket for Phone Removal

Turn the SpeedBracket over so the device is facing up.

Gently pull the 2 arms on the side of the device and the top and bottom to create enough room to remove the device.

Once enough room exists, remove the device from the SpeedBracket.



Step 4 – Add New Device to SpeedBracket

Insert the new device into the SpeedBracket and slide the side, top and bottom arms into place so there is nice fit of the device.

NOTE – MAKE SURE THAT THE DEVICE IS PUT INTO THE BRACKET IN THE CORRECT ORIENTATION. THE CONNECTOR SIDE OF THE DEVICE SHOULD GO TOWARDS THE CABLE CAPTURE ON THE BOTTOM OF THE BRACKET.



Step 5 – Secure the SpeedBracket to the Device

Using your left hand, grip the two side brackets and top bracket standing the SpeedBracket perpendicular to the fixture.

Firmly pushing down on the fixture and squeezing the sides and top, tighten the center screw until tight.



Step 6 – Validate SpeedBracket is Secure

To validate that the SpeedBracket is secure, take your two palms and press strongly on the side arms and then the top and bottom arms.

Additionally pull at the side and side arms to check for further movement.

If the brackets do not move or you do not hear a click, the bracket is secured.

Double check that the screw is tight

NOTE – IF YOU HEAR A CLICK OR THE BRACKET MOVES, THIS MEANS THE BRACKET IS NOW PROPERLY ALIGNED. YOU WILL NEED TO TIGHTEN THE SCREW AGAIN. AFTER TIGHTENING, PLEASE VALIDATE THAT THE BRACKETS DO NOT MOVE.



Step 7 – Attach SpeedBracket to FMII Position

Facing the FMII product, turn the SpeedBracket slightly to the left (at 10 o'clock) and place onto the top of the silver puck.

Once engaged, turn to the right 30 degrees until you hear a click. The device will be locked into position.

Verify that the SpeedBracket is attached by wiggling the bracket. If the SpeedBracket stays attached, the product is secure.

Insert the SmartCable into the puck end, ensure the retainer clips both click into place.

Then attach the SmartCable into the connector end of the device.

NOTE – MAKE SURE THE SPEEDBRACKET IS PROPERLY INSTALLED AND THE CABLE CAPTURE SIDE OF THE BRACKET IS THE CONNECTOR OF THE PUCK. IF UPSIDE DOWN THE SPEEDBRACKET WILL NOT PROPERLY FASTEN.