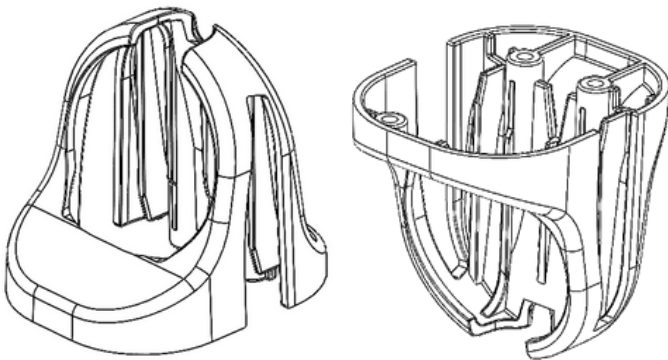


NOTES BEFORE INSTALLING: Do not overtighten screws. Overtightening screws may damage the threads on devices and Freedom products. Disable alarm before installation and enable alarm after installation is complete.

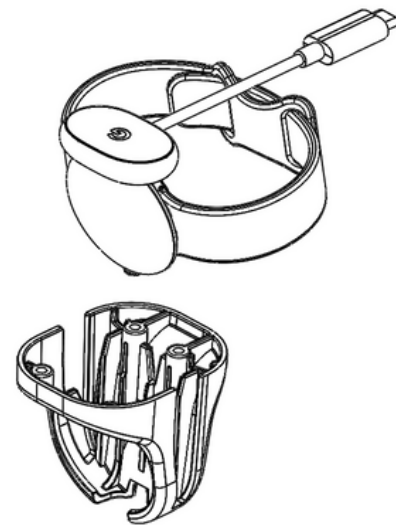


1 Flip **Watch Enclosure Top** upside down to install watch and charger.



2 Slide watch and charger into watch enclosure top with watch bands in slots

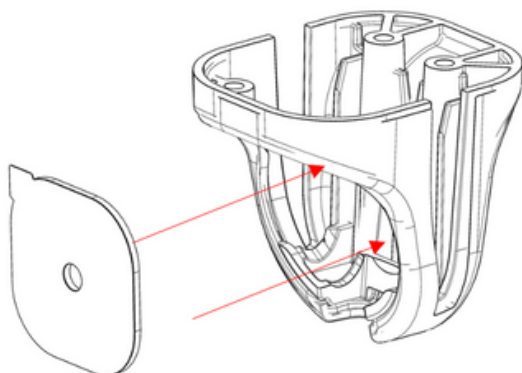
***Note:** Smaller Watch will require use of the included Small Watch Adapter Plate and Small Watch VHB. Go to step #3 for smaller watch installation.



3 **For small watch installation only - continue to Step 6 for large watch directions*

For smaller watch installation:

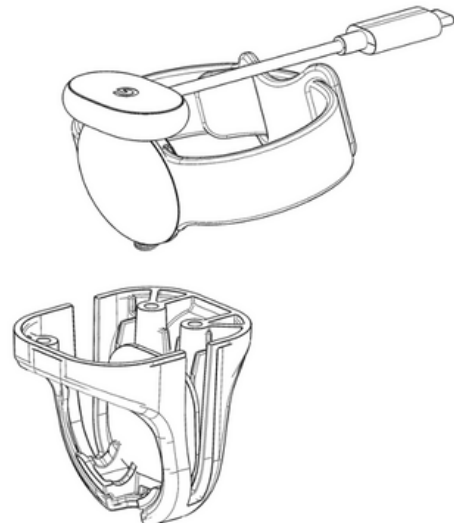
- Place and adhere small watch VHB against the interior back wall
- Peel the red film from the VHB adhesive



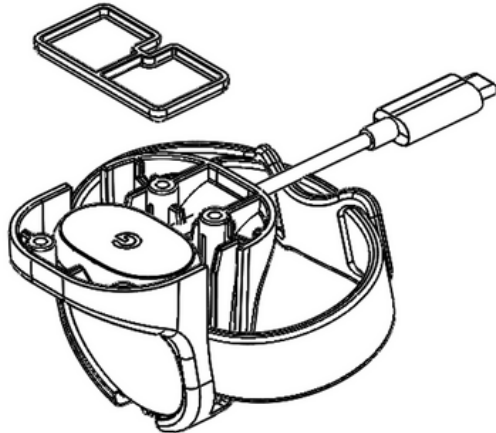
4 **For small watch installation only - continue to Step 6 for large watch directions*

For smaller watch installation:

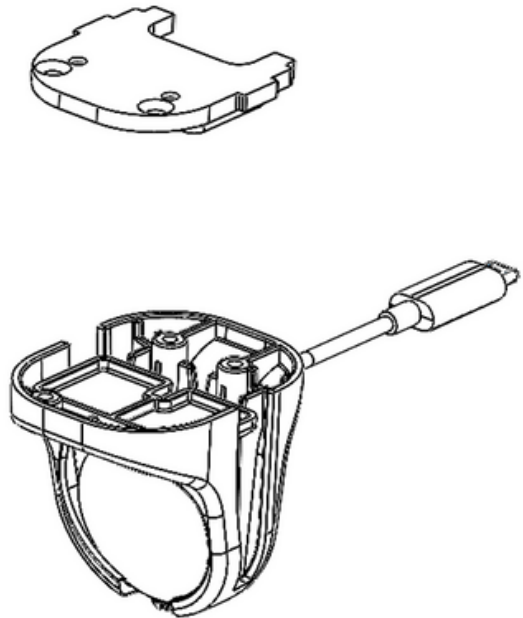
- Slide watch and charger into watch enclosure top with watch bands in slots



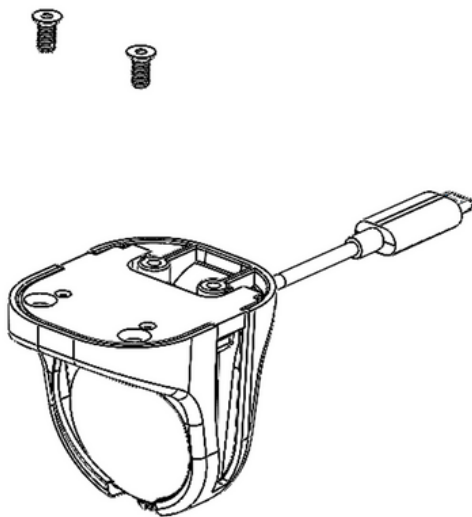
- 5 **For smaller watch installation:**
- Use the included Small Watch Adapter Insert
 - Place the insert directly below the watch charger aligned as shown



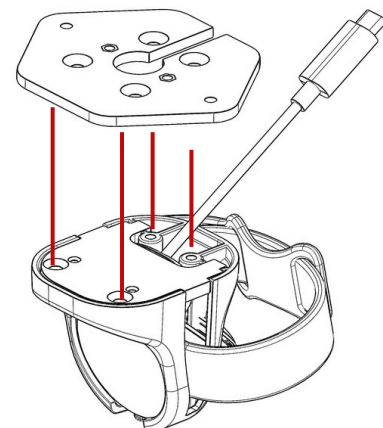
- 6 Place Base Plate and align with screw holes



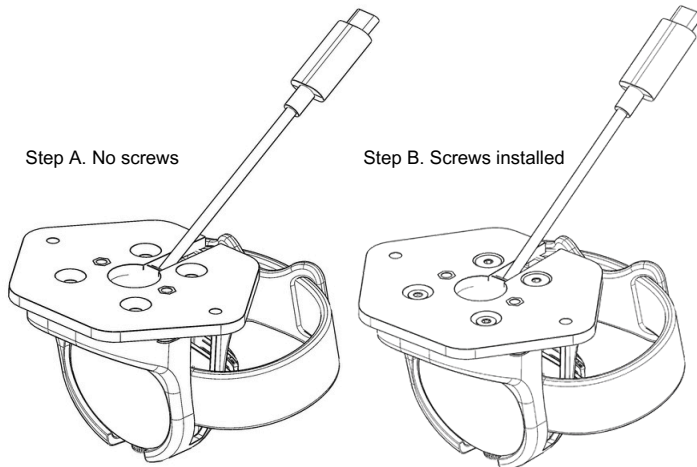
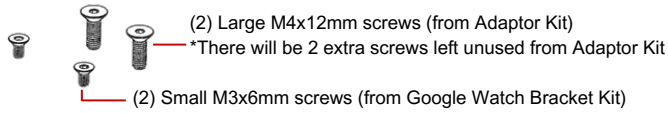
- 7 Thread (2) large M4x9mm screws (from Google Watch Bracket Kit) and tighten



- 8 Align adapter bracket with 4 screw holes



- 9 Thread 4 screws and tighten
- 2 Smaller screws go into the two front facing screw holes
 - 2 Larger screws (from existing system) go into the two rear facing screw holes



- 10 Attach adapter brackets and hardware, flip assembly right side up and install into fixture

