

Product Manual for **FREEDOM CORE II™ POWER/SCREAMER SENSOR**

Contents

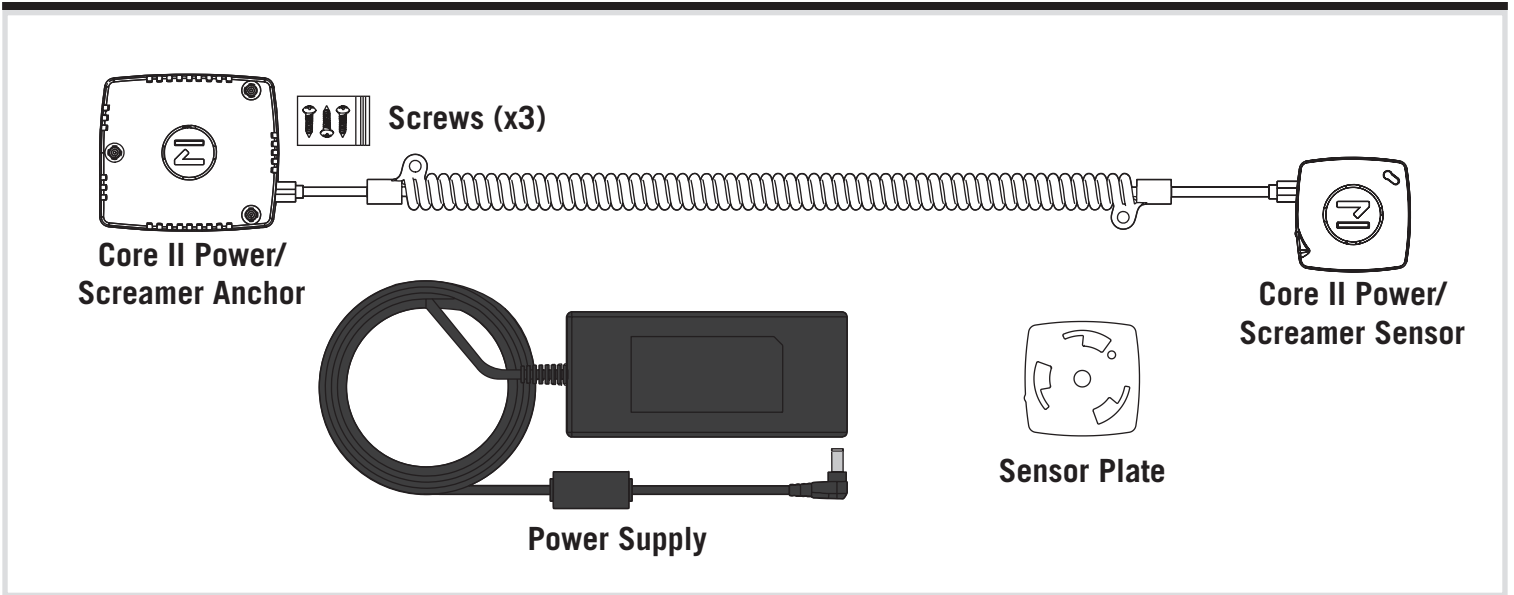
1.	Materials in Box	2
2.	Anchor Installation	3
3.	Merchandising	4
4.	Using Transfer Tape	5
5.	Arming The System	6
6.	Remerchandising	7
7.	Changing the Anchor	8
8.	Sensor Riser Installation	9
9.	LED Troubleshooting	10
10.	Limited Warranty	11

DO NOT REMOVE FROM STORE


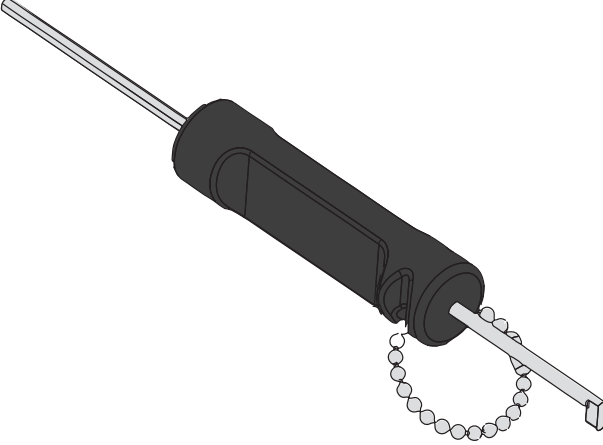
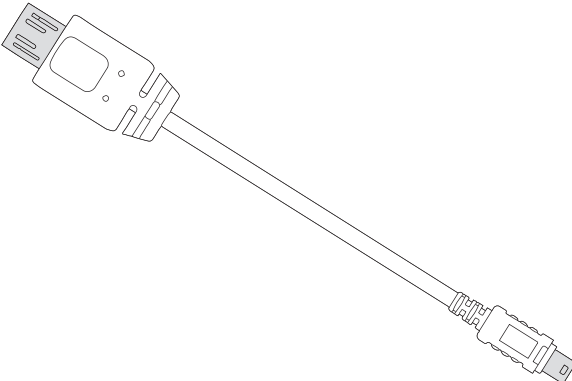
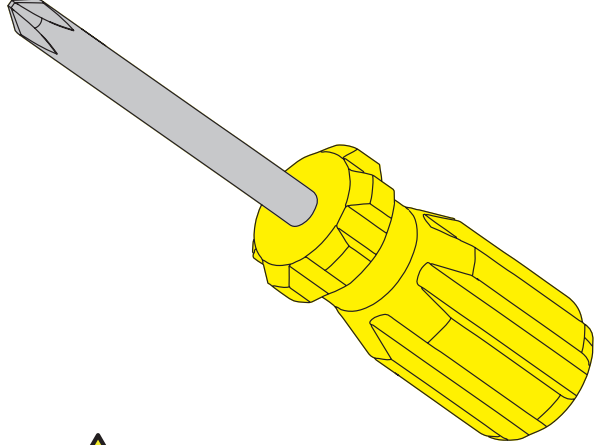



**For additional support, please reach out to our
Contact Center at 800-426-6844**

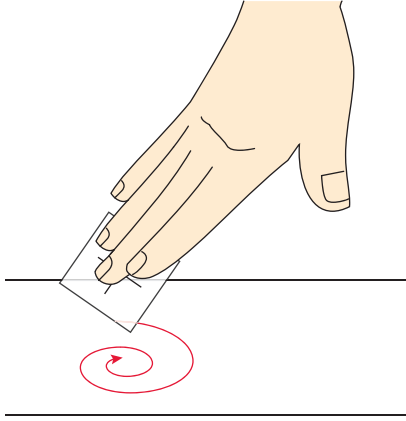
MATERIALS IN BOX



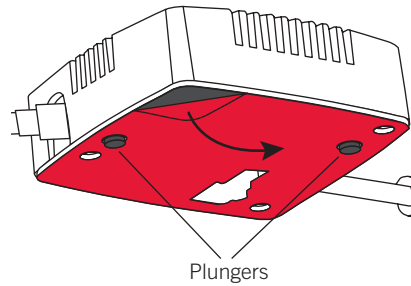
REQUIRED BUT NOT INCLUDED

<p>Power Supply Cable</p> 	<p>Double-Sided System Tool</p> 
<p>GeniusCables</p> 	<p>Philips-Head Screwdriver</p>  <p> Required for screw down installations.</p>

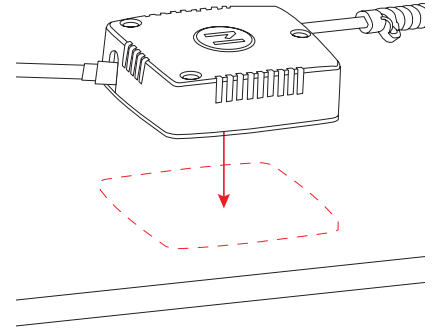
- 1** Clean the fixture with an alcohol swab and let air dry or wipe dry with a clean cloth.



- 2** Peel the red film from the VHB adhesive (pre-installed on the Power/Screamer Anchor).

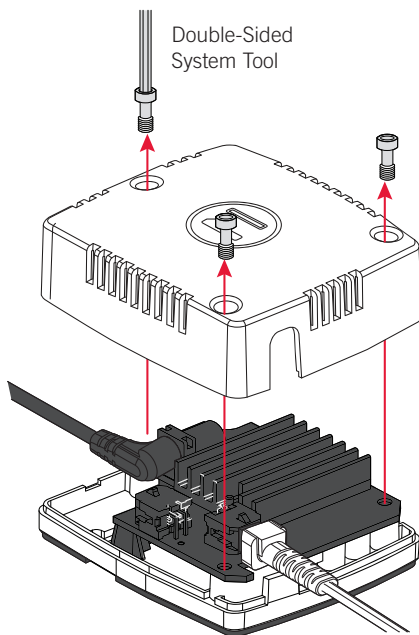


- 3** Place in desired location. Ensure VHB is fully adhered and plungers are fully depressed or they may cause false alarm condition.

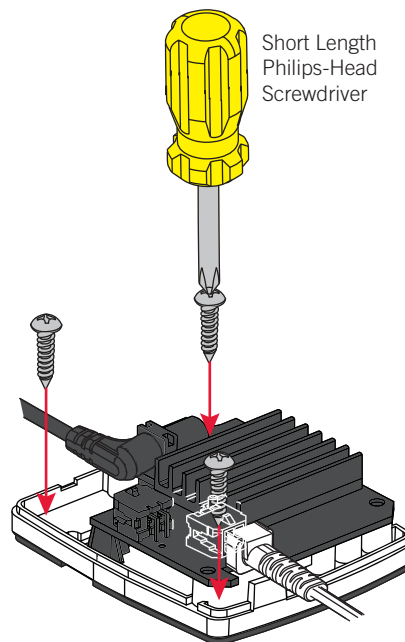


SCREW DOWN ANCHOR INSTALLATION

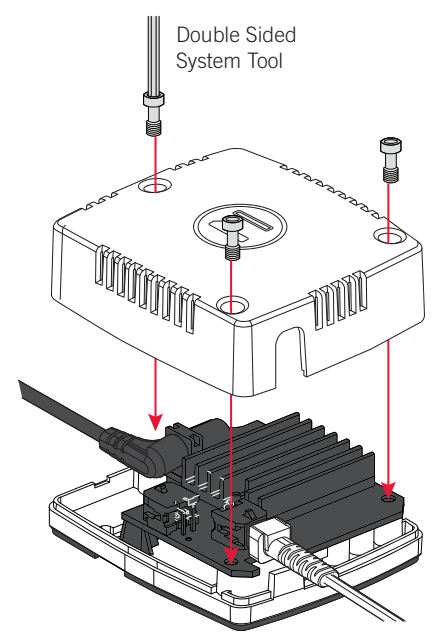
- 1** Using the Double-Sided System Tool, remove the cover on the Power/Screamer Anchor.



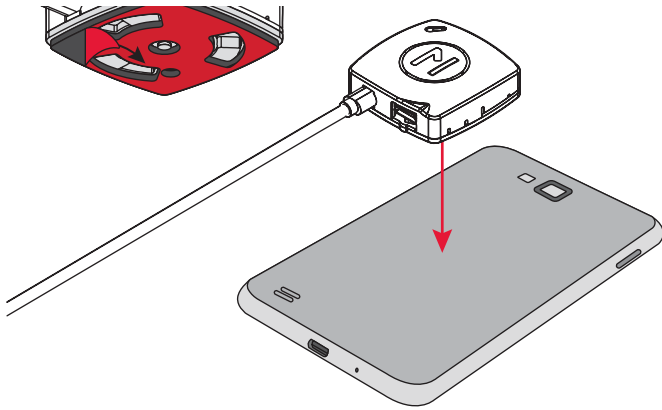
- 2** Using a short length philips head screwdriver, secure the anchor to the desired location.



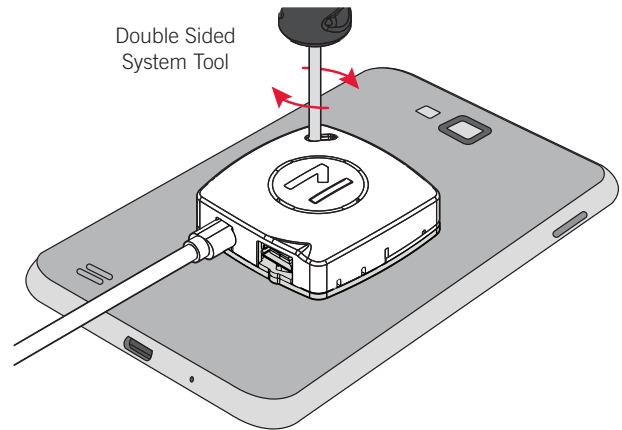
- 3** Replace the cover on the Power/Screamer Anchor using the Double-Sided System Tool.



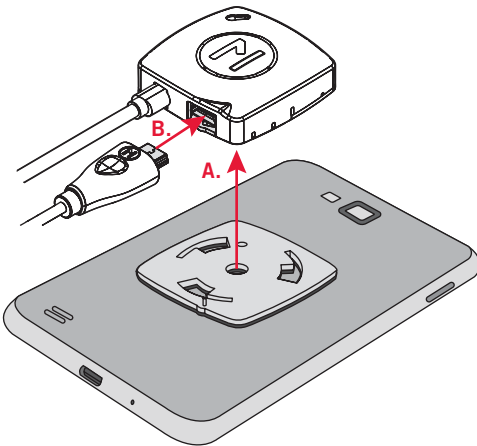
- 1** Clean the demo device with an alcohol swab and let air dry or wipe dry with a clean cloth. Peel the red film from the VHB adhesive on the Sensor. **If not using GeniusCables, skip to step 6.**



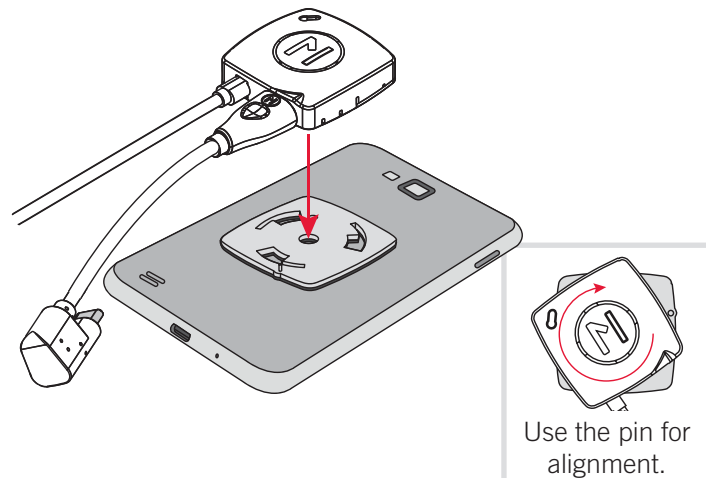
- 2** Using the Double-Sided System Tool, turn clockwise and then twist to remove the Sensor from the base plate.



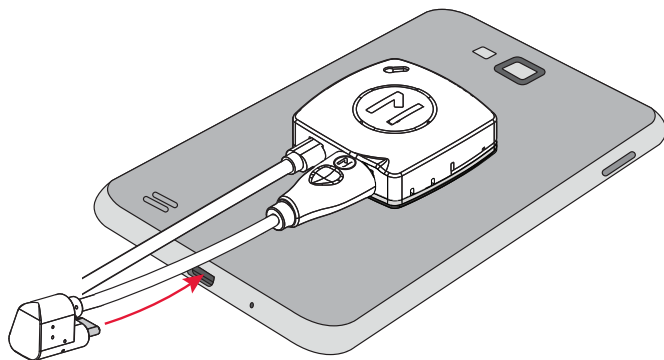
- 3** Insert the desired GeniusCable into the Sensor port. The Sensor **must be detached** from device before GeniusCable can be installed. GeniusCable is locked into the Sensor after re-installation.



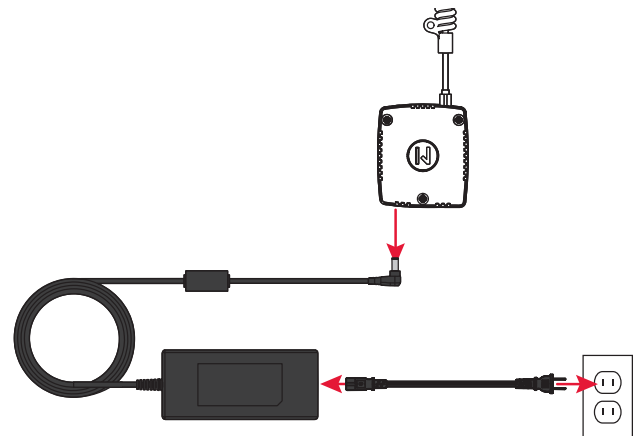
- 4** Using the pin on the Sensor for alignment, twist the Sensor onto base plate until it snaps and locks into place.



- 5** Connect GeniusCable to device.



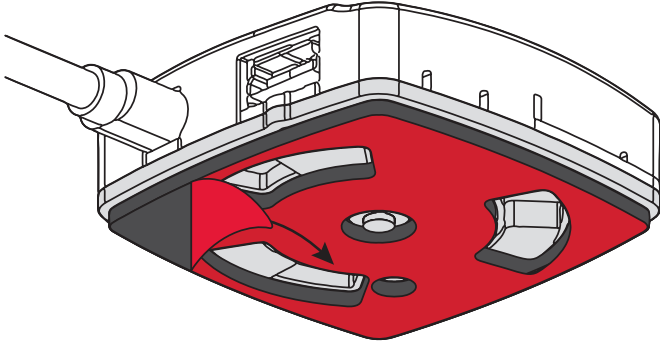
- 6** Use the individual power supply and plug it into the nearest outlet.



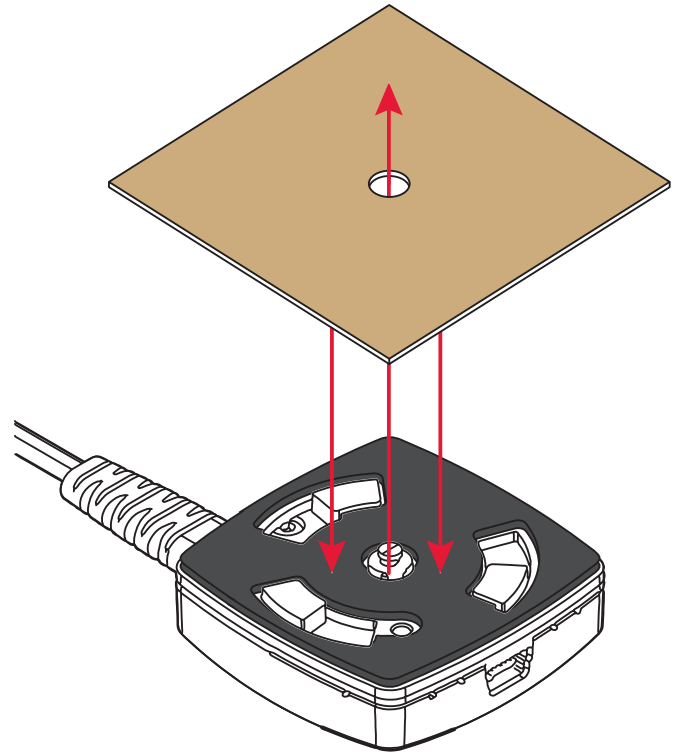
The socket-outlet shall be installed near the equipment and shall be easily accessible.

IF USING TRANSFER TAPE

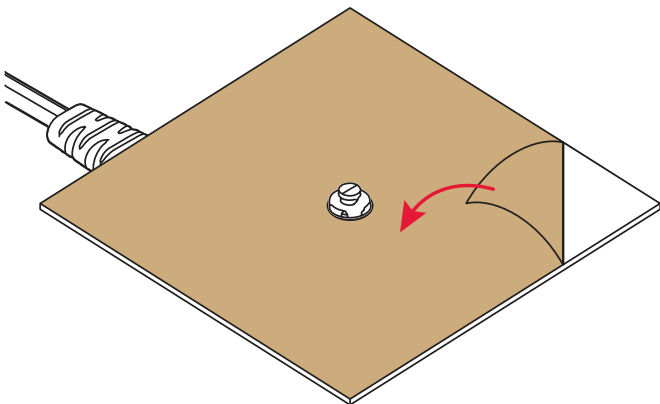
1 Peel the red film from the VHB adhesive on the Sensor.



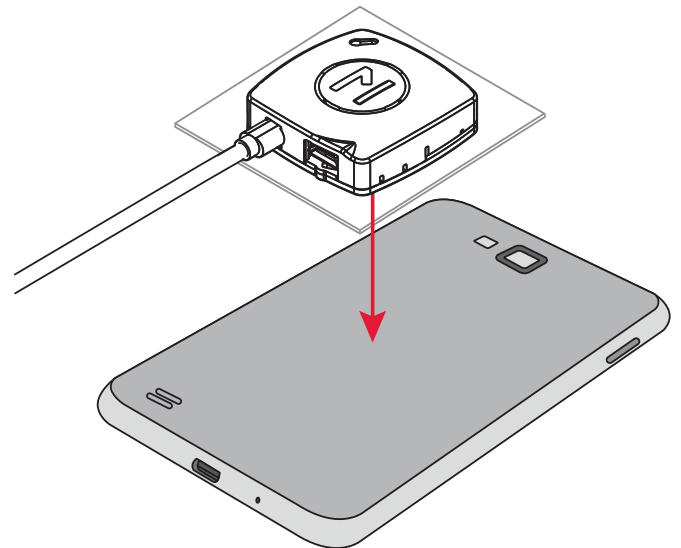
2 Place the Adhesive Transfer Tape on the Power Screamer Sensor, lining up the center hole on the Adhesive Transfer Tape with the plunger on the sensor.



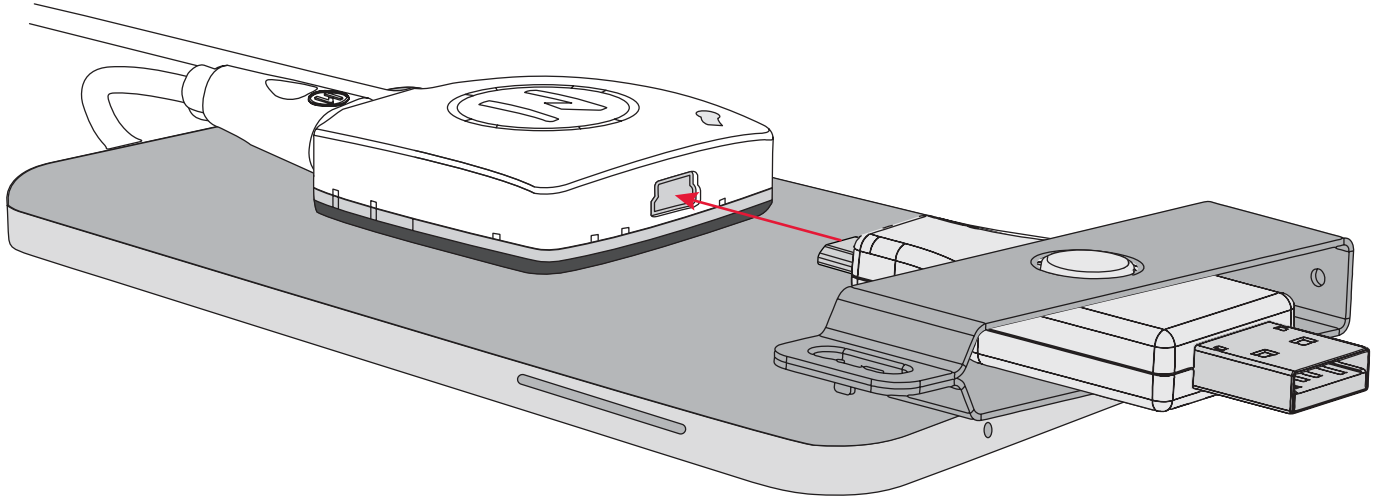
3 Peel the film from the Adhesive Transfer Tape.



4 Place on the desired device.



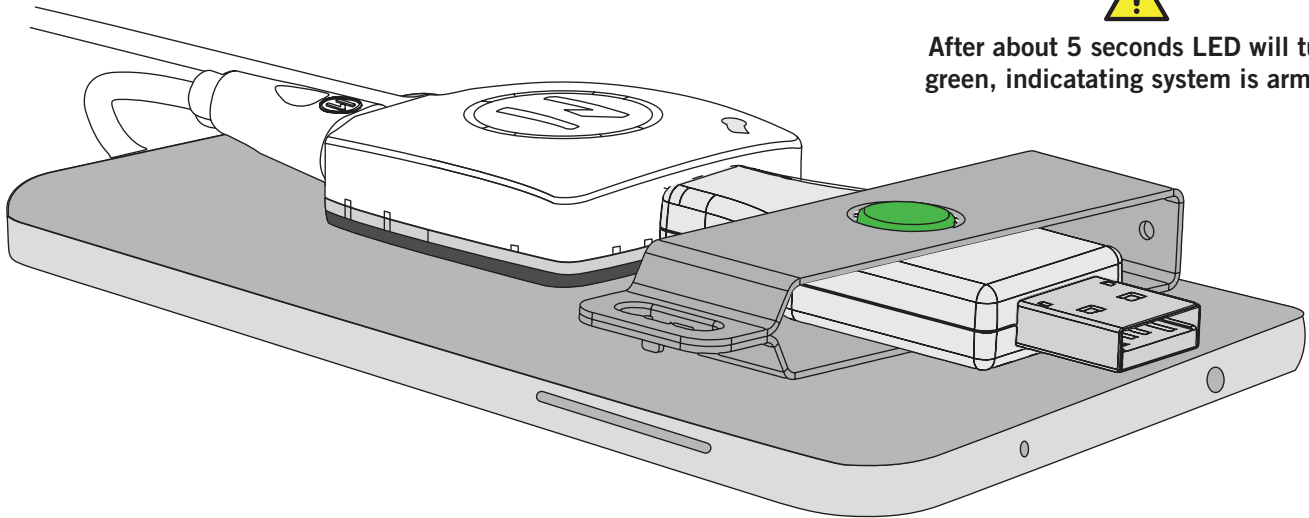
1 Insert IntelliKey into Power/Screamer Sensor.



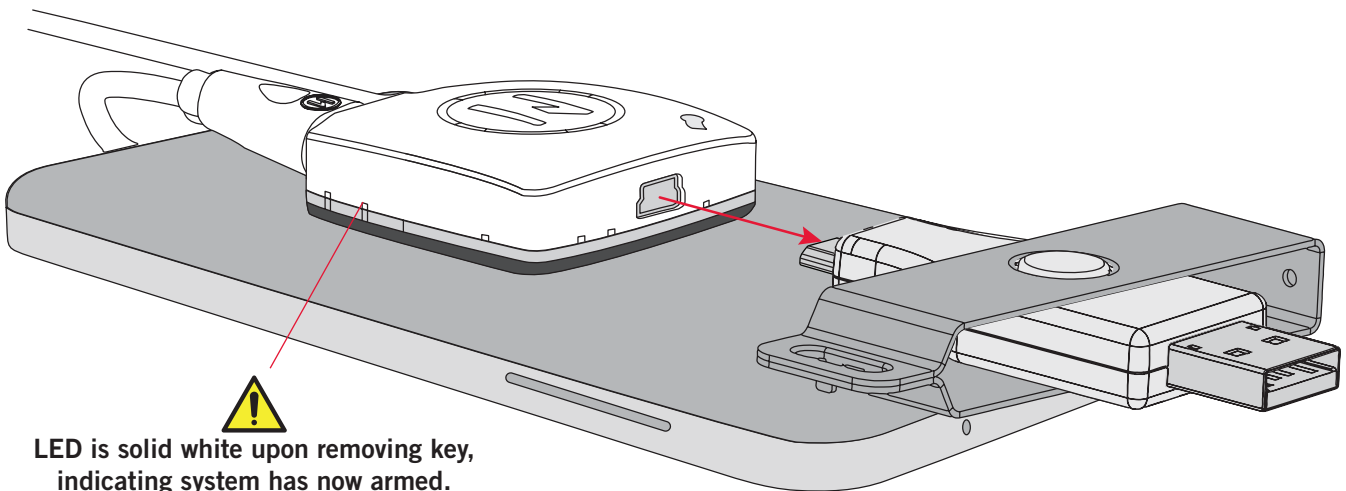
2 Wait until the IntelliKey LED turns green.



After about 5 seconds LED will turn green, indicating system is armed.

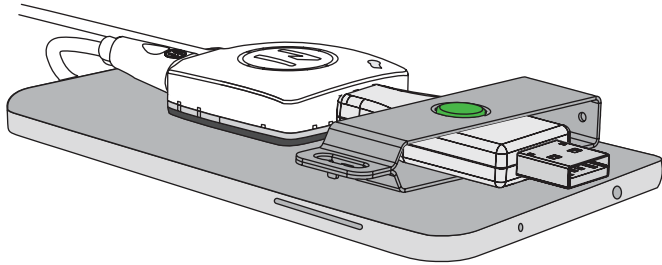


3 Remove IntelliKey from Power/Screamer Sensor to arm the system. LED will turn solid white.

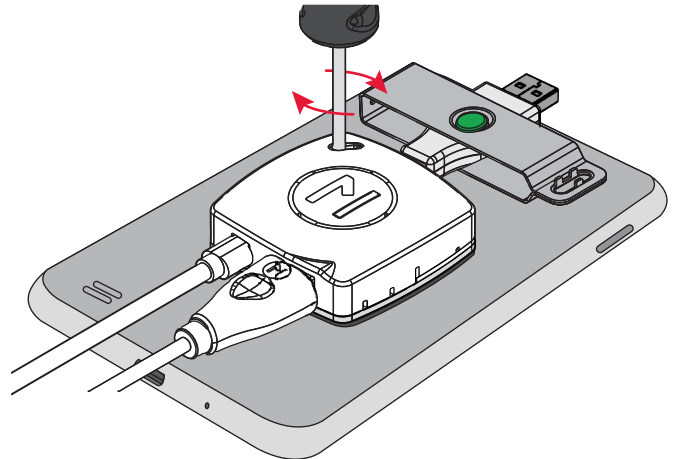


LED is solid white upon removing key, indicating system has now armed.

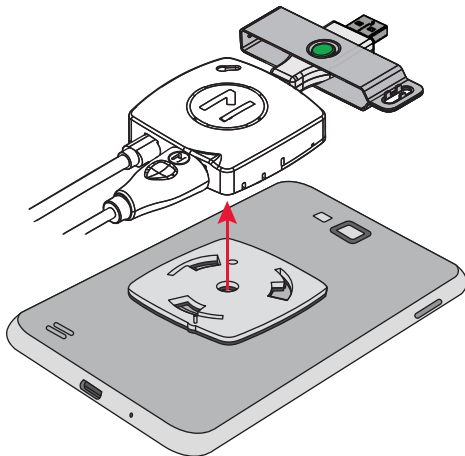
1 Insert IntelliKey into Power Screamer port until LED turns green.



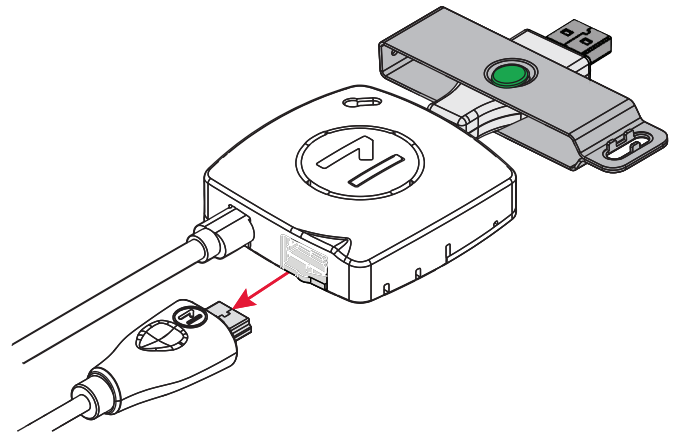
2 Using the Double-Sided System Tool, turn clockwise.



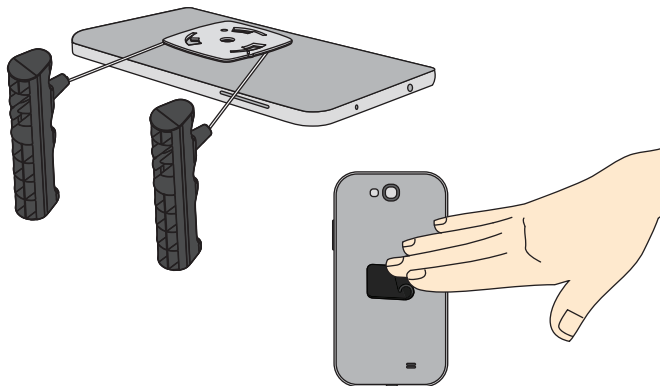
3 Turning clockwise, twist off the Power Screamer from the base plate.



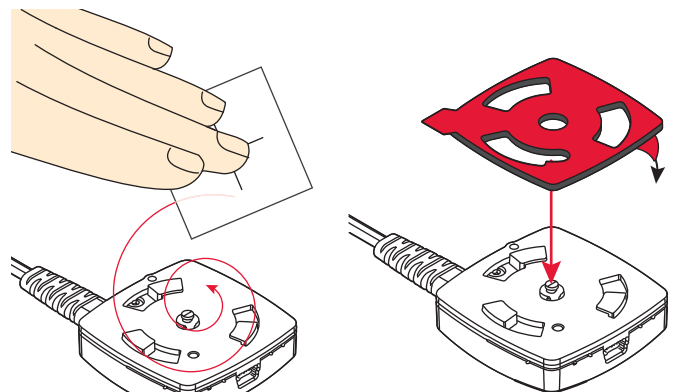
4 Remove the GeniusCable.



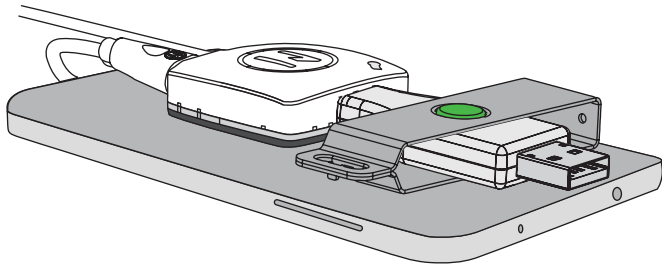
5 Hold the Adhesive Pad Removal Tool with both hands and using a sawing motion, pull one side of the tool, then the other back and forth until the VHB is released from the base plate. Remove excess VHB by rolling it off the surface.



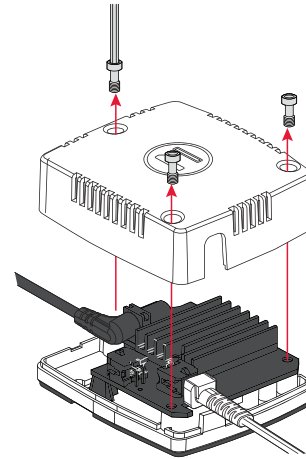
6 Clean the Power Screamer with an alcohol swab and let air dry or wipe dry with a clean cloth. Replace VHB with extra pads provided.



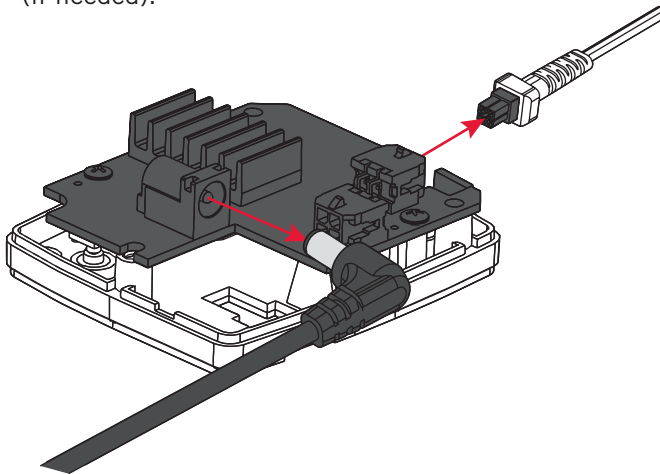
- 1** Insert IntelliKey into Power Screamer port until LED turns green.



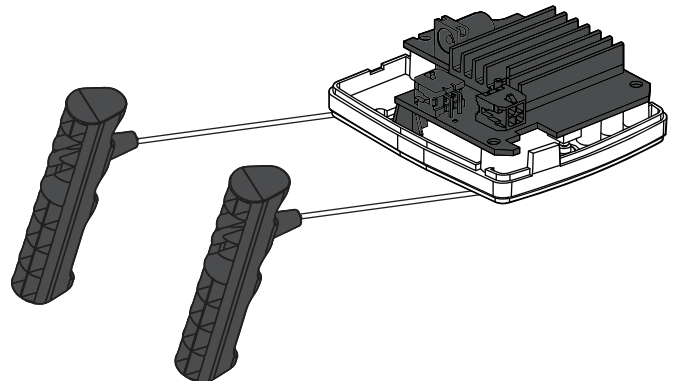
- 2** Remove the three screws in the top of the Power/Screamer Anchor using the Double-Sided System Tool.



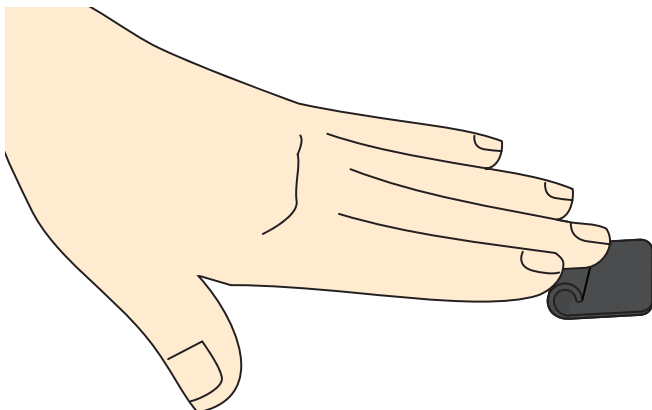
- 3** Unplug the power supply from the Power/Screamer Anchor and remove the Power/Screamer Sensor cable (if needed).



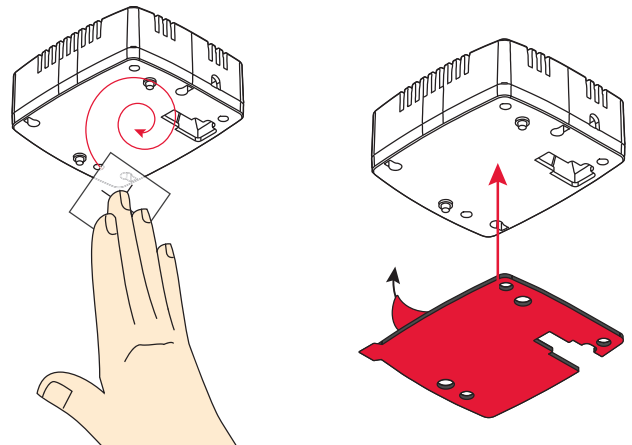
- 4** Hold the Adhesive Pad Removal Tool with both hands and using a sawing motion, pull one side of the tool, then the other back and forth until the VHB is released from the Power/Screamer Anchor.



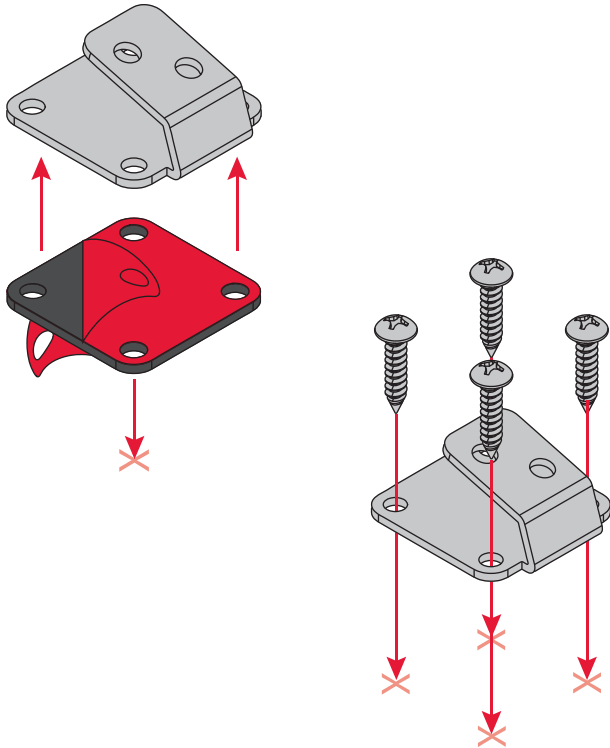
- 5** Remove excess VHB by rolling it off the surface.



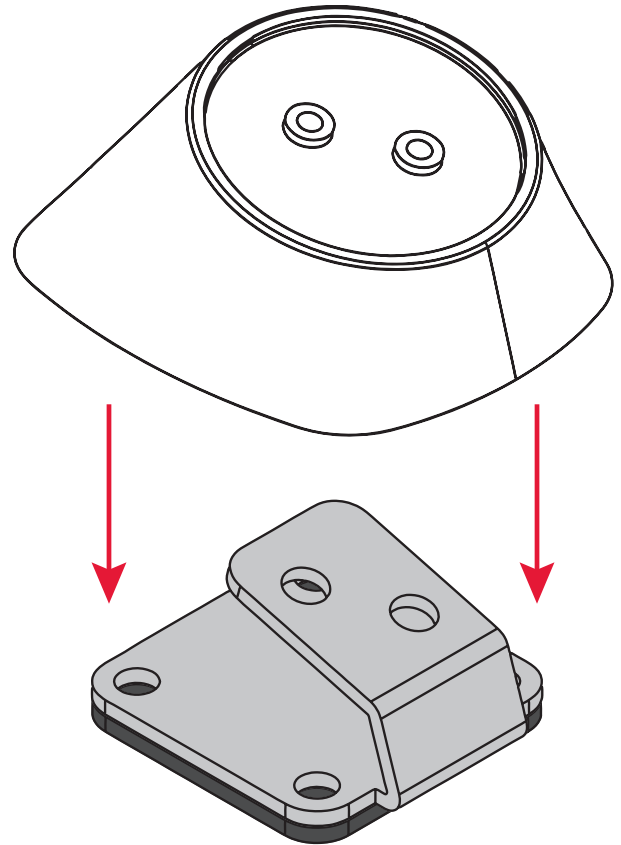
- 6** Clean the Power/Screamer Anchor with an alcohol swab and let air dry or wipe dry with a clean cloth. Replace VHB with extra pads provided.



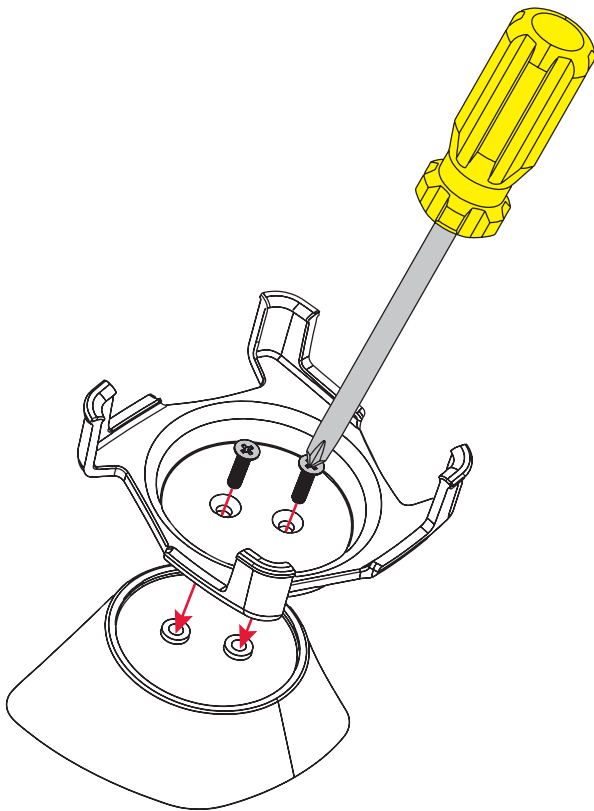
- 1** Mount the internal riser bracket either by applying VHB to the bottom and placing it in the desired location or by screwing the bracket to the surface of the fixture.



- 2** Place the riser shell over the internal bracket.

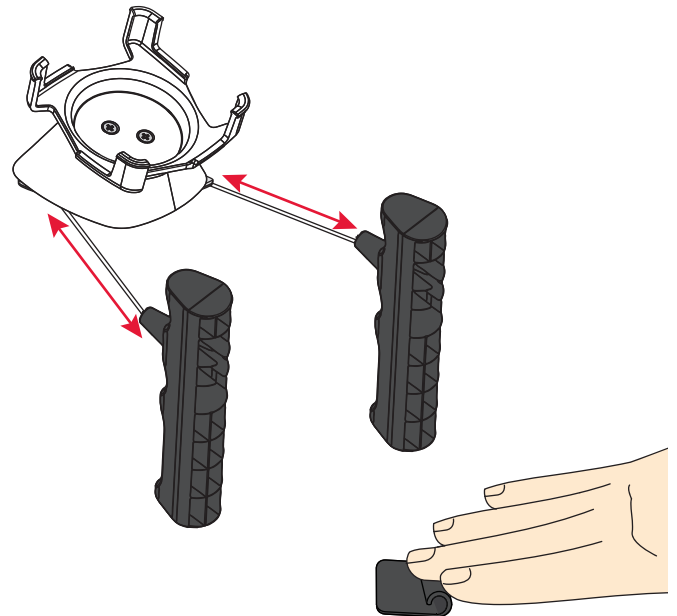


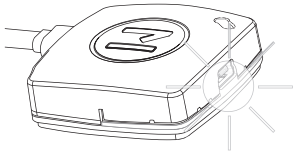
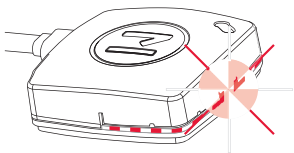
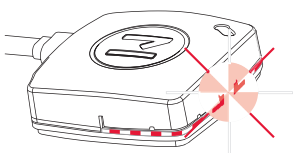
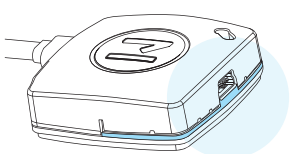
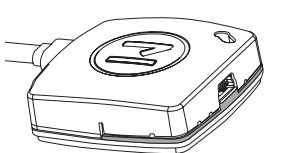
- 3** Attach the cup to the riser shell and interior bracket using the two screws.



REMOVAL

To remove the screwed down position, simply reverse the installation process. To remove a VHB position, Hold the Adhesive Pad Removal Tool with both hands and using a sawing motion, until the VHB is released from the base plate. Remove excess VHB by rolling it off the surface.



Visual Reference	System Status	Condition	Solution
	Sensor white double flash every 8 seconds No audible alarm	Power is on, Sensor is disarmed	Mount customer product and program/arm system
	Sensor flashes red and white Steady alarm	Sensor is in a state of alarm due to theft, tampering or improperly mounted customer product	Insert IntelliKey to silence alarm Fix alarming condition (check mounted product) Remove IntelliKey
	Sensor flashes red and white No audible alarm	Sensor has been alarming for more then 10 minutes.	Insert IntelliKey to silence alarm Fix alarming condition (check mounted product) Remove IntelliKey
	Sensor LED solid blue No audible alarm	Short circuit in GeniusCable or over current from the device	Replace GeniusCable If issue is not resolved, the device is too power hungry for Freedom Core II system and cannot be merchandised with it
	Sensor LED off Five double-beeps	System is in a state of battery back-up mode SYSTEM CANNOT BE PROGRAMMED IN THIS STATE	Reconnect power

In order to maximize consumer shopping experience during open hours, consider the following steps to extend battery life:

- TURN OFF or put all displayed devices/SKUs in SLEEP mode for the off hours for your store.
- Lowering the brightness level (during open hours) on your devices by 15-20%

If you experience any condition not listed above, please contact Customer Service at 1-800-426-6844, Opt. 1

Seller warrants all Products manufactured by Seller to be free from defects in material and workmanship. Seller's warranty shall begin on the date of shipment to Customer. The length of the warranty is determined by the Product type as set forth below.

Base units, display puck assemblies (enclosure and ECB, excluding puck battery), alarm modules (enclosure and ECB), Piezo alarms, secondary sensors, electronic security sensors, quad cables, power/data link cables, IntelliKey Switch Module assemblies, Keyswitch assemblies, Keypad assemblies, puck adapters and custom design brackets/adapters for the Freedom™ Consumer Electronic Handheld (CEhh) Merchandising System ("Freedom™ System"), and NFC electronics boards in the Freedom™ System, all OnSite® switching modules and video/audio switching and distribution modules for the Audition Signal Management System ("Audition System"), multimedia players, format converters, resolution scalers and audio/video cables for the Audition System are warranted for a period of one (1) year.

CarbonTether™ assemblies, both powered and mechanical and SmartTether™ assemblies are warranted for a period of one (1) year.

AirTether™ assemblies are warranted for a period of six (6) months.

Seller provides no warranty hereunder for Power Supplies, and Customer must rely solely upon any warranty provided by the manufacturer of such Power Supplies. Certain manufacturer warranties are on file with Seller and may be made available upon Customer's request. Seller warrants all batteries to be free from defects in materials and factory workmanship, and warrants any battery that fails to perform as specified within six (6) months after date of shipment. This warranty shall not apply if buyer fails to notify MTI of such defect within ten (10) days after discovery, or if battery has been subjected to misuse, negligence or accident.

The following components of the Freedom™ System are considered consumable items and Seller provides no warranty for such items: USB interconnect cables, extension cables, SmartCables, FlexSensors, Membrane Sensors, anti-skid pads, anti-rotation brackets, VHB adhesive pads, X- and L-brackets, CC- and DC-brackets, cable clamps, zip ties, and installation, retrieval and removal tools. Unused SmartCables and Secondary Sensors that are demonstrated by Customer to have been faulty upon delivery to Customer will be replaced at Seller's expense; provided, however, Customer shall be responsible for any and all related shipping and handling costs.

All other Seller-manufactured Products, not specified above, are warranted for a period of one (1) year.

Seller's warranty expressed herein does not apply to the following:

- Cartons, cases, cabinets, displays, or any other unit attached to or otherwise connected to a Seller-manufactured Product.
- The labor and other costs associated with the removal and replacement of the warranted Product or any component thereof.
- Products used in applications beyond their normal intended use, application, or rated specifications.
- Products damaged by accident, abuse, improper voltage, faulty installations, mechanical failure, fire, flood, lightning, civil unrest, or any act of God.
- Warranty services rendered by any party other than Seller unless so authorized by Seller.
- Replacement parts and equipment that have been discontinued or are otherwise unavailable.
- Products from other manufacturers that are integrated by Seller into Customer's system(s) are not warranted by Seller and are subject only to that warranty, if any, provided by the manufacturer of such Product(s).

Subject to the limitations stated herein, and at Seller's sole discretion, Seller will replace or repair defective Products or components thereof at no charge to Customer so long as Customer's account with Seller is current and Customer has returned the Product(s) or component thereof pursuant to a properly issued Return Material Authorization.

Replacement of any Product or any component thereof by Seller under this warranty provision shall not extend, in any way, the length of the original applicable warranty period otherwise provided for herein.

Seller reserves the right to replace a defective Product or component thereof with a refurbished Product or component.

Seller's warranty herein is non-transferable and shall extend only to Customer.